



# TRAILBLAZER



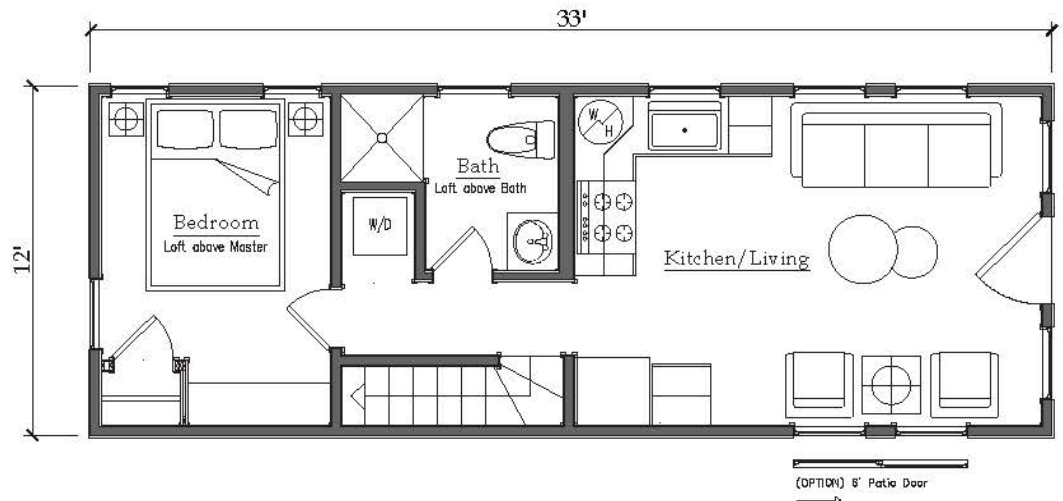
Dimensions: 12'x33'

+ 12'x6' Porch  
Square Feet: 396 SF + Loft

Beauty meets function in this compact cabin that feels like a luxurious home.

The "function" is taken care of with unexpected standard features like maintenance-free siding, all-wood interiors and commercial-grade flooring. High quality materials, coupled with our small batch construction practices, mean you can expect more peace and less projects.

The "beauty" of this 1Bd/1Ba cabin shines through high-impact features like a coffee bar, a dedicated laundry nook, built-in dressers and open shelving, and large light-filled windows wrapped up in an all-wood interior stained to reflect your personal style.



## FEATURES

- Maintenance-free siding
- Lasting metal roof
- All-wood interiors
- Durable vinyl plank flooring
- Residential grade appliances
- Built-in storage options
- 6 foot deep front porch (option)
- Loft above bedroom and bathroom
- Safe staircase loft access
- Compact stackable washer/dryer

**CONTACT US TODAY!**  
**877-DK-CABIN**

8199 36th St. SE, Jamestown, ND 58401  
701-252-7908 darren@dakcab.com www.dakcab.com

**FOLLOW US ONLINE!**

